



**G.D. GOENKA PUBLIC  
SCHOOL**



UNDER THE AEGIS OF  
GD GOENKA GROUP



# **D. GOENKA**

## **PUBLIC SCHOOL, BAREILLY**

**GD GOENKA GROUP OUR NATIONAL FOOTPRINT**

**1,50,000**

Students And Alumni  
Across The Globe

**20+**

States & Uts

**20+**

La Petite Montessori  
Pre-school

**100+**

Toddler House  
Pre-schools

**130+**

K12 Schools

**20+**

Years of  
GD Goenka University

**80+**

Healthcare  
Academics

**30+**

Years in  
Tourism

## MESSAGE OF CHAIRPERSON

At GD Goenka Public School, Bareilly, we believe that education is not just about acquiring knowledge but also about building character, nurturing values, and fostering lifelong learning. Each child is a valued individual, and our child-centered philosophy ensures that every student receives the guidance, encouragement, and opportunities needed to reach their maximum potential.



**MS. ANSHU SINGH GAUTAM  
(CHAIRPERSON)**

In today's rapidly evolving world, education must go beyond textbooks. While academic excellence remains at the heart of our vision, we also emphasize a well-rounded approach that integrates intellectual, physical, and creative development. Our mission is to equip students with the skills, confidence, and values necessary to face the challenges of the 21st century with resilience and determination.

# VISION

In our vision for the school, each and every student should develop and mould their ambitions towards perfection.

The goal is to support and nurture the student's and our own natural desire to be lifelong learners. We anticipate

creativity and initiative, enterprise and innovation, and cognitive strategies for progressive learning. Our vision is to prepare and motivate our students for a rapidly changing world, by instilling in them critical thinking skills, a global perspective and a respect for core



## HOW WE NURTURE

HANDS ON LEARNING EXPERIENCE

INSPIRING CURIOSITY AND CRITICAL THINKING

EXTRA CURRICULAR SKILL BUILDING PROGRAMS

PROMOTING HEALTH AND WELLNESS

TECH ENABLED CLASSROOMS

GLOBAL PERSPECTIVE

SOCIAL AND ENVIRONMENTAL PROJECTS

## MISSION

The school motto **HIGHER STRONGER BRIGHTER** takes its core idea from a quest for excellence, an insatiable thirst for knowledge and a limitless craving for the latest.

Our mission is to provide a safe haven where everyone is valued and respected. The faculty, in partnership with parents and families are fully committed to student's college and career readiness. Students are empowered to meet current and future challenges to develop social awareness, civic responsibility and personal growth.



# Infrastructure







**SCIENCE LABS** : Fully equipped with modern apparatus for Physics, Chemistry, and Biology, these Labs allow students to engage in practical experiments and discoveries.

**ROBOTICS LAB** : A hub for innovation, where students learn coding, automation, and robotics to prepare for the tech-driven future.



**COMPUTER LABS** : Designed with high-speed internet and advanced systems, these labs support computer literacy and digital skill development from an early age.

**INNOVATION LABS**: A space for creativity and invention, these labs encourage students to explore and develop groundbreaking ideas. Creative Arts and Performing Spaces The school provides dedicated Rooms to nurture artistic talents and self-expression:



**ART ROOM**: A vibrant space filled with tools and resources to inspire budding artists.

**Music and Dance Rooms**: Well-equipped rooms where students explore rhythm, melody, and movement under expert guidance.



**Activity Rooms**: Specially designed for kindergarten students, these rooms are filled with age-appropriate resources to promote experiential learning and play.





- **Loving and caring staff**
- **Spacious learning playing and rest space**
- **Nutritious Meal**
- **Outdoor Games**
- **Safe Environment**

**Age 2.5 to 8 years**  
**Timing 9:00am to 5:00pm**  
**Ages 8 to 12 years**  
**Children willing to join after 2:00pm will have Tuition, Olympiad, Robotics, sports & performing arts classes.**

## TRANSPORT FACILITY

Our school offers an excellent transport facility on affordable charges with GPS-enabled buses and trained staff. Regular maintenance and strict safety protocols ensure a hassle-free commute for students. At G.D. GOENKA PUBLIC SCHOOL, BAREILLY, we believe that an inspiring infrastructure is the foundation of quality education.

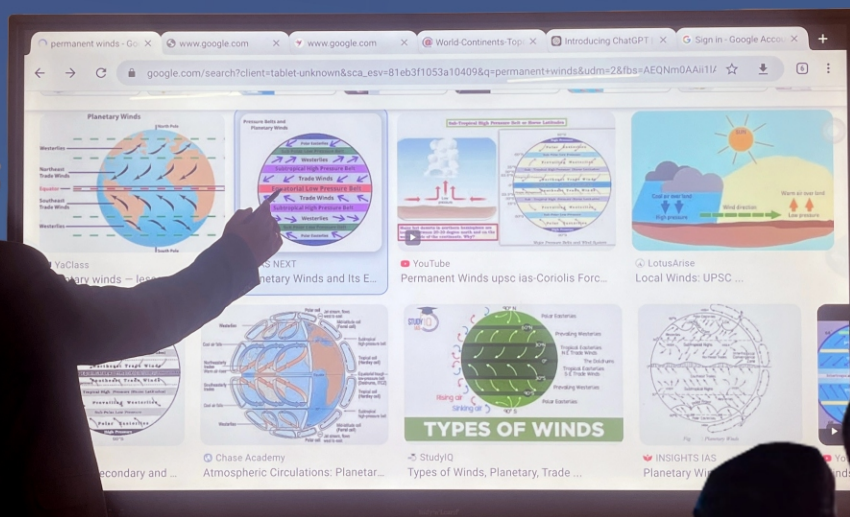




# CURRICULUM

## THE WAY WE TEACH HOW WE ARE

1. AI and STREAM based teaching learning process
2. Robotics curriculum from grade 3
3. Speech and Drama Curriculum to strengthen Life Skills- FLIPS
4. Sports and Performing Arts integration – Each 1 child – specialization in one sports and one Musical instrument.
5. VR and AR enabled Learning materials.
6. Exposure to all types of School based National and International Competitive exams – like Spell bee ,NTSE,NTSE,IEO,NSO, ASSET , Geo genius etc.
7. Participation in ECA, CCA and sports events organized by school & Sahodaya.
8. Student Led Conference and Culmination activities, Ted Students Platform, will reflect the academic learning standards.
9. Collaborative classroom teaching strategies will strengthen student centric learning process.
10. Self-assessment, Peer assessment and Parent assessment will be part of assessment.
11. Activity based experiential learning pedagogy by the teacher to enable student to develop competencies.



# FOUNDATIONAL LEVEL CURRICULUM (GRADE PRE-PRIMARY TO II)

Reading  
(ability to decode the meaning of a written string)

Listening  
(ability to decode the meaning of an audio string)

Writing  
(ability to encode thoughts and concepts into written form)

Speaking  
(ability to encode thoughts and concepts into oral form)

CREATIVE  
DEVELOPMENT

PERSONAL, SOCIAL  
AND EMOTIONAL  
DEVELOPMENT

PHYSICAL  
DEVELOPMENT

LANGUAGE  
& LITERACY

GENERAL  
AWARENESS

MATHEMATICS

KEY  
DEVELOPMENT  
DOMAINS



## EMPHASIS ON LSRW



# FOUNDATIONAL LEARNING FOR 5 YEARS

## NURTURING THE SEEDS OF KNOWLEDGE



# CBSE -CURRICULUM FOR PREPARATORY STAGE (GRADE 3 TO 5)

Preparatory level in accordance with the National Curriculum Framework (NCF) involves a student-centric approach. GDGPS Ensure a play-based and experiential learning environment, emphasizing the following principles:

## 1. Holistic Development



## 2. Language and Literacy:

Emphasize language development through storytelling, rhymes, and interactive sessions. Encourage a print-rich environment to stimulate early literacy skills.

## 3. Mathematics

Introduce basic mathematical concepts through games, puzzles, And hands on activities. Emphasize understanding Over rote learning.





6. **Creative and Collaborative Classrooms-** The Classroom learning happens not through teaching or content learning rather understanding and conceptualizing through discussions, interpretations and deliberations among the students through collaborative activities.

7. **Preparation for Competitive World-**Our school emphasis on national and international competitions alongside the syllabus. Our school fosters an environment that encourages ambition, academic excellence and a drive for success among the students. Spell Bee, Olympiads, National talent Search exams, STEAM competitions, Robotics, MUN, Youth Parliament etc.



**Sahil Agarwal** of Class-VIII got IInd Position WHO Committee at the Yale MUN X GD Goenka event.

8. **Assessment Strategies:** GDGPS Use qualitative assessments and observation techniques to understand each child's progress. Avoid excessive formal testing, focusing on a comprehensive understanding of a child's capabilities. Short formal written assessments are appropriate for this Stage. Teachers' observation of students' work continues to form an important assessment mechanism. Periodic summative assessments shall be utilised to supplement the more regular formative assessments. Summative assessments at the end of this Stage shall be based on the Competencies defined in the Learning Standards.

9. **Parental Involvement:** As GDGPS culture, we Foster collaboration with parents through regular communication, workshops, and involvement in school activities. Keep them informed about their child's progress and provide resources for extended learning at home.

10. **Experiential Learning-** GDGPS Emphasis completely on Experiential Learning. We make Learning experienced and it ensures that it is challenging enough to have problem-solving and decision-making ingredients in it. Experiential Learning promotes critical thinking, creativity and effective study skills among students.

11. **Subjects offered at this stage are -**

English	Robotics
Second Language-Hindi & Sanskrit	Steam
EVS / Science	Sports and Performing arts
Social Studies	General awareness
Mathematics	Abacus & Vedic Maths
Computers-information Technology	Music
Cambridge English assessment	Aptitude and Reasoning

12. **Teaching & Assessment based on Competency-based Education (CBE) .-** As per CBSE guidelines, we at GDGPS follow an educational method that has an outcome based approach for better proficiency of students in learning using a demonstration of the skills, knowledge, values, and Attitudes that help in real-life situations at the age and grade-appropriate levels.

# CBSE CURRICULUM FOR MIDDLE SCHOOL (VI-VIII)





# WE SHALL ACHIEVE

- 1) We equip children with 21st century skills-
- 2) Developing scientific temper through critical thinking activities.
- 3) Capacity to capability-. Emphasizing its commitment to empowering students to not only possess knowledge and skills but also to effectively apply them in real-world contexts.
- 4) To create a Holistic and Multi disciplinary education Integrating various subjects and perspectives, encouraging students to make connections across disciplines, and emphasizing real-world applications to prepare them for diverse challenges that thrive in an interconnected world.

Assessments: Apart from two Term Exams, regular competency based assessments through activities and pen and paper exams will be part of the teaching learning process for diagnosing the progress of every individual student.

## SUBJECTS OFFERED

English	Design Thinking, Innovation and Robotics
Second Language-Hindi & Sanskrit	STREAM
EVS / Science	Sports & Performing Arts
Social Studies	Art & Music
Mathematics	Current affairs
Computers-information Technology	Reasoning and Aptitude
Cambridge English Assessment	

## **SECONDARY LEVEL (CLASSES IX & XII)**

The curriculum at this stage focuses on foundational knowledge and skill-building through a balanced mix of academics, co-curricular activities, and life skills education.

Core subjects include:

Languages (English & Hindi/Other Regional Languages)

Mathematics & Basic Mathematics

Science (Physics, Chemistry, Biology)

Social Science (History, Geography, Political Science, Economics)

Health & Physical Education

Art Education

Work Education & ICT

Assessments include periodic tests, internal assessments, and the CBSE Board Examination at the end of Class X.

Senior Secondary Level (Classes XI & XII)

At the Senior Secondary Level, the NEP 2020 emphasizes a multidisciplinary approach, allowing students **greater flexibility in choosing subjects across various streams**—Science, Commerce, and Humanities—based on their interests and career aspirations. This approach aims to reduce the rigid separations between academic streams, promoting a more holistic and integrated learning experience.

The curriculum is designed to foster critical thinking, creativity, and problem-solving skills, aligning with the NEP's vision of holistic education. Assessments are being restructured to include more competency-based questions, moving away from rote memorization towards evaluating students' understanding and application of knowledge.

Additionally, all students study English and can opt for skill-based subjects as per CBSE guidelines. Practical applications, research projects, and extracurricular engagement enhance learning outcomes.

Our curriculum prepares students for competitive exams and higher education while nurturing creativity, leadership, and problem-solving abilities.

application.





# CAMBRIDGE ENGLISH LANGUAGE ASSESSMENTS (CELA)

We integrate Cambridge English Language examinations within the school curriculum to bring a world of difference to English Language Acquisition among the students. Students will become more confident speakers of English after they have gone through the Cambridge English Language examinations, and they will continue to learn English through the Cambridge English syllabus to prepare themselves for their future.

## WHY CAMBRIDGE ENGLISH:

Cambridge English Exams are designed to assess how learners use English to communicate in real-life situations.

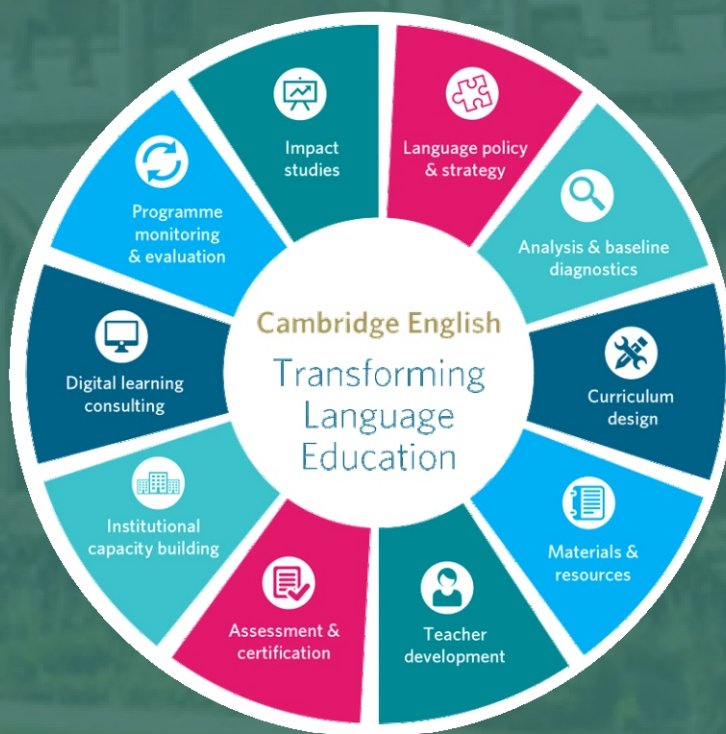
The communicative aspect of English is developed as a whole through all four skills: Reading, Writing, Listening and Speaking.

Teachers preparing students for our exams are giving them communication skills they can use for everyday life, work and study.

All exams are aligned with the Common European Framework of Reference for Languages (CEFR) – the international standard for describing language ability.

It is easy for employers and educational institutions to specify the level of English ability they require, and for learners to choose the right exam to reach their goal.

Accepted for work, immigration and study Globally Many Cambridge English exams are also accepted for visa and study purposes in the UK, Australia, USA and Canada.







**INNOVATION & ROBOTICS LABS:  
PREPARING STUDENTS FOR TOMORROW**



# A VISION FOR THE FUTURE

At **G.D. GOENKA PUBLIC SCHOOL, BAREILLY**, the Robotics and Innovation Labs are more than just facilities; they are a launchpad for the innovators, engineers, and leaders of tomorrow. Through these labs, we inspire curiosity, foster creativity, and empower students to dream big and achieve more.

## Why Robotics and Innovation Labs Matter

### Hands-On Learning

Our labs provide a hands-on, experiential learning environment where students can design, build, and program robots. This cultivates critical thinking, creativity, and problem-solving skills.

### STEM Integration

Through projects in Science, Technology, Engineering, and Mathematics (STEM), students gain practical insights into how these disciplines intersect in real-world applications.

### Encouraging Innovation

The labs are equipped to spark creativity, allowing students to experiment with new ideas, develop prototypes, and work on collaborative projects that solve real-world challenges.

**Cutting-Edge Technology** From robotics kits and 3D printers to AI tools and coding platforms, the labs feature advanced technologies that keep

students at the forefront of modern Innovation. Personalized

**Learning Pathways** Students are encouraged to pursue their interests, whether it's coding, engineering, artificial intelligence, or electronics, through tailored projects and mentorship. Participation in Competitions our students

regularly participate in national And International Robotics and innovation competitions, providing them with exposure and opportunities to showcase their talent. **Fostering Entrepreneurial Skills** The labs

help nurture entrepreneurial thinking by Encouraging Students to develop solutions to real-World problems and Pitch their ideas.





# VIRTUAL REALITY (VR) LABS: REVOLUTIONIZING EDUCATION

✍ At G.D. GOENKA PUBLIC SCHOOL, BAREILLY, we are proud to offer a state-of-the-art Virtual Reality (VR) Lab, a first-of-its-kind initiative designed to transform traditional learning into an immersive and interactive experience. By leveraging the power of VR technology, we ensure that students not only understand concepts but experience them in a way that enhances their overall learning outcomes.

## BENEFITS OF THE VR LAB FOR STUDENTS

- ✍ Makes learning engaging and enjoyable through Interactive experiences.
- ✍ Encourages curiosity and fosters a love for discovery.
- ✍ Provides a safe space for experimentation and exploration.
- ✍ Bridges the gap between theoretical Knowledge and practical application.

## A VISION FOR THE FUTURE

### At G.D. GOENKA PUBLIC SCHOOL, BAREILLY

our VR Lab is more than just a technological feature—it's a gateway to a world of Possibilities.

By incorporating Virtual Reality into our curriculum, we empower students to Visualize, interact, and learn in ways never before imagined.

This initiative reflects our Commitment to innovation, excellence, and preparing students For success in a dynamic global Environment.









# SPORTS AND PERFORMING ARTS (SPA) A HOLISTIC APPROACH TO DEVELOPMENT

At **G.D. GOENKA PUBLIC SCHOOL, BAREILLY**, we recognize that education extends beyond academics. Our Sports and Performing Arts (SPA) program is designed to foster creativity, discipline, teamwork, and resilience in our students. Starting from Grade 6, every student will choose one sport and one performing art as part of their year-long activity, which they will pursue for a minimum of three years.

## KEY FEATURES OF THE SPA PROGRAM:

### SPORTS & GAMES

**FOOTBALL | CRICKET**  
**BASKETBALL | VOLLEYBALL**  
**SWIMMING**

### PERFORMING ARTS

**THEATER | PAINTING**  
**INSTRUMENTAL MUSIC**  
**(GUITAR, DRUMS & PIANO)**  
**VOCAL**

Students can select ONE each from both categories and get Professional coaching for mastering skills and compete at various levels.

By dedicating three years to their chosen activities, students develop a deep understanding and expertise in their selected areas.





# GLIMPSES OF SPORTS ACHIEVEMENT



**EESHIKA NATHAN, SHERYA KUMARI NANDINI ARAYANA, ANSH KHANDWAL, SAMRAT of VII won Silver Medal In ISA Table Tennis tournament**



**BHAVIK GARG of Class-VII won Gold Medal in State tournament Left hand best player District tournament.**





# EXTRA CURRICULAR ACTIVITIES



At G.D. GOENKA PUBLIC SCHOOL, BAREILLY, we believe that education extends beyond the classroom. Our diverse range of extracurricular activities provides students with opportunities to develop their skills, explore their passions, and foster leadership and teamwork.

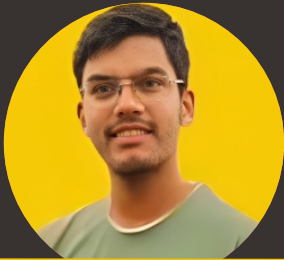
MUN, Youth Parliament, TeDstudent, Interact Club youth festival, social empowerment programs. Fun and Adventure Camps, Study tour and excursions, Expert Talk sessions and environment awareness programs are some of those extra curricular activities that enrich students learning.





# OUR SHINING STARS

## CLASS XII



**AVIRAL AGARWAL**  
PCM-93.8%



**SHREYANSH MISHRA**  
PCM-95.6%



**ABHISHEK YADAV**  
PCM-95.4%



**SANIYA ZAHRA**  
PCM-90.2%



**ARADHYA KODESIA**  
PCM-89.2%

## CLASS X



**AVIKA KANNAUJIYA**  
PCM-97.8%



**KUMAR VASHISHTHA**  
PCM-95.2%



**ADHIRAJ AGARWAL**  
PCM-95%



**VARNICA AGARWAL**  
PCM-92.6%



**PARIN MENDIRATTA**  
PCM-92.6%



**PRANAV SAGAR**  
PCM-91.6%



**VIDHI RAJGADHIA**  
PCM-91.6%



**KRISHNA**  
PCM-91.4%



**FOCUS ON  
HOLISTIC  
DEVELOPMENT**



**ROBOTICS &  
INNOVATION LABS**



**PROFESSIONAL SPORTS, MUSIC,  
SPEECH & DRAMA ACADEMIES**



**EXCELLENT STUDENT  
TEACHER RATIO**



**SMART  
CLASSROOM**

**INDIVIDUALIZED  
ATTENTION**



 **+91 9012616969**

 **www.gdgoenkabareilly.com**

**connect@gdgoenkabareilly.com** Follow us on  